

**WORKSHOPS**

September 28–October 2, 2015

Distributed Control and  
Decision Making Over  
Networks

October 19–23, 2015

Analysis and Control of  
Network Dynamics

November 16–20, 2015

Biological Systems and  
Networks

January 25–29, 2016

Optimization and  
Parsimonious Modeling

March 14–18, 2016

Computational Methods  
for Control of PDEs and  
Distributed Systems

April 11–15, 2016

Quantum and Nano Control

May 9–13, 2016

Control at Large Scales:  
Energy Markets and  
Responsive Grids

**ORGANIZING COMMITTEE**

**Fariba Fahroo**  
Defense Advanced Research Projects Agency

**Tryphon Georgiou**  
University of Minnesota

**J. W. Helton**  
University of California, San Diego

**Anders Rantzer**  
Lund University

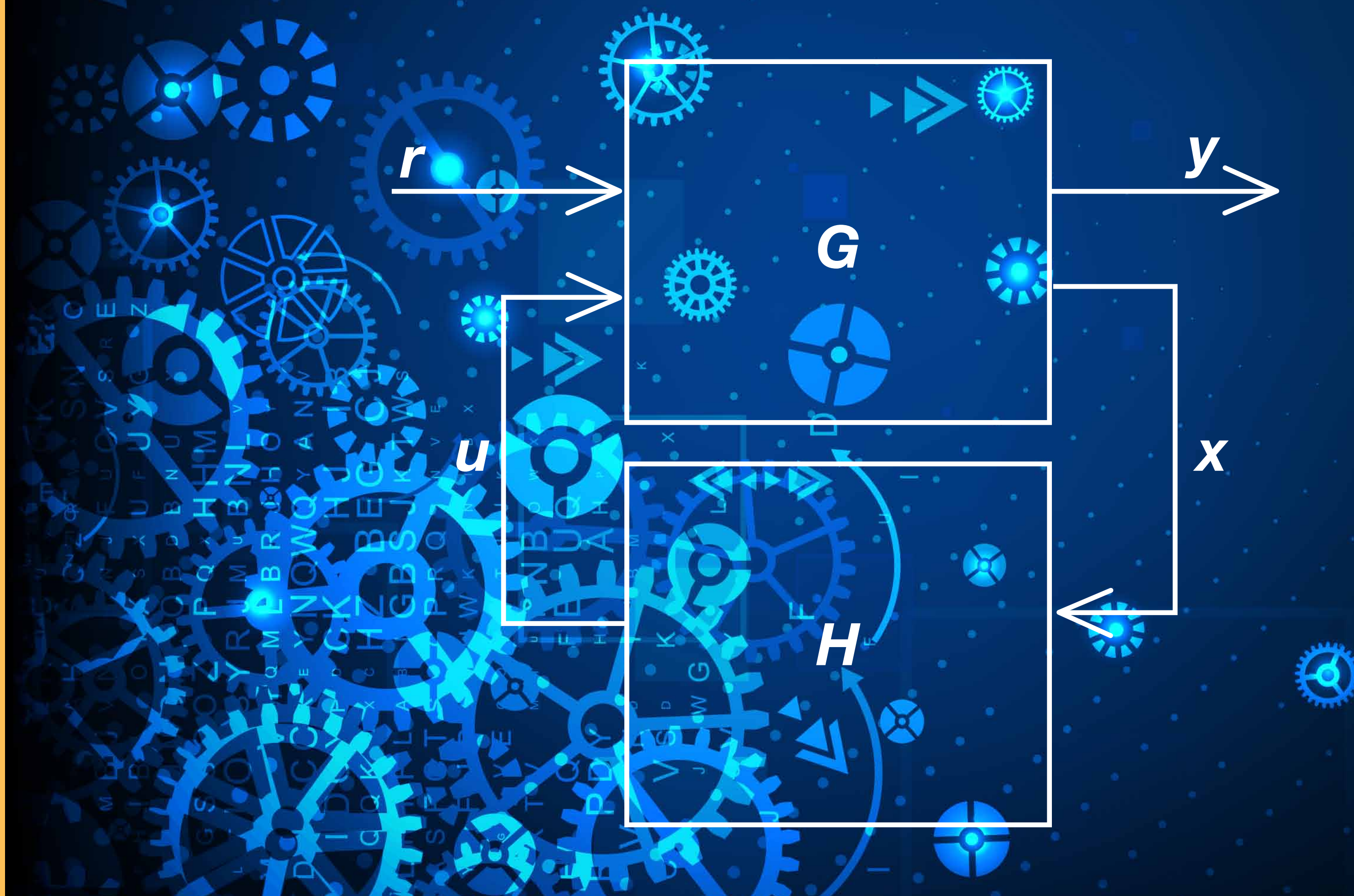
**Tariq Samad**  
Honeywell

**Eduardo D. Sontag**  
Rutgers University

**Allen Tannenbaum**  
Stony Brook University

[www.ima.umn.edu/2015-2016](http://www.ima.umn.edu/2015-2016)

# Control Theory and its Applications



COLLEGE OF  
Science & Engineering

UNIVERSITY OF MINNESOTA

Driven to Discover<sup>SM</sup>



**IMA Participating Institutions:** Arizona State University, Colorado State University, Georgia Institute of Technology, Indiana University, Iowa State University, Korea Advanced Institute of Science and Technology (KAIST), Michigan State University, Michigan Technological University, Mississippi State University, National Institute for Mathematical Sciences (NIMS), Northern Illinois University, Ohio State University, Pennsylvania State University, Pohang University of Science and Technology (POSTECH), Portland State University, Purdue University, Rice University, Seoul National University, Texas A&M University, University of Central Florida, University of Chicago, University of Delaware, University of Houston, University of Illinois, Urbana-Champaign, University of Iowa, University of Kansas, University of Kentucky, University of Maryland, University of Michigan, University of Minnesota, University of North Carolina, Greensboro, University of Notre Dame, University of Pennsylvania, University of Pittsburgh, University of Tennessee, University of Wyoming, Wayne State University, Worcester Polytechnic Institute, Zhejiang University • **IMA Participating Corporations:** Boeing, Corning Incorporated, Eaton Corporation, ExxonMobil, Ford, General Motors, Honeywell, IBM, Los Alamos National Laboratory, Medtronic, National Institute of Standards and Technology, Sandia National Laboratories, Schlumberger-Doll, Siemens

The IMA receives major funding from the National Science Foundation and the University of Minnesota.