

Method of Background Subtraction for Medical Image Segmentation

Hyeona Lim
 Department of Mathematics and Statistics
 Mississippi State University

Joint work with Seongjai Kim

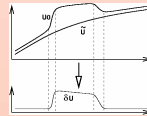
IMA Workshop on New Mathematics and Algorithms for 3-D Image Analysis, January 9, 2006

Motivation

- Medical images can involve noise, diverse artifacts, and unclear edges.
- Conventional segmentation methods show difficulties when applied to medical imagery.

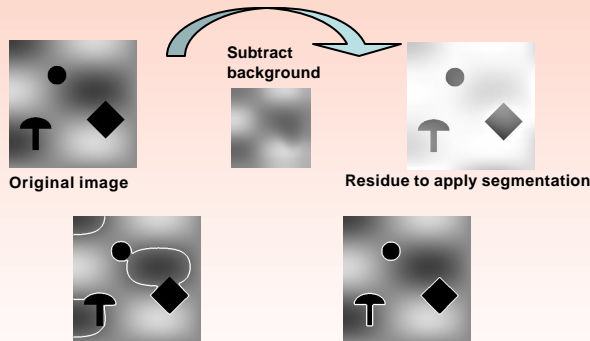
Introduction

- Apply method of background subtraction (MBS) to minimize difficulties.
- When an appropriate background \tilde{U} is subtracted from the given image U_0 , the residue can be considered as an essentially binary image dU .
- The MBS can be used as a pre-process of various segmentation methods and can be applied to 3-D medical imagery.



Procedure of the construction of background

- I. Select a coarse mesh $\{\Omega_{ij}\}$ for the image domain Ω and choose a coarse image U_c on $\{\Omega_{ij}\}$. Each element Ω_{ij} in the coarse mesh corresponds to $m_x \times m_y$ pixels for some $m_x, m_y \geq 1$.
- II. Smooth U_c .
- III. Prolongate U_c to the original mesh Ω , for U_f .
- IV. Smooth U_f . Assign the result for the background \tilde{U} .

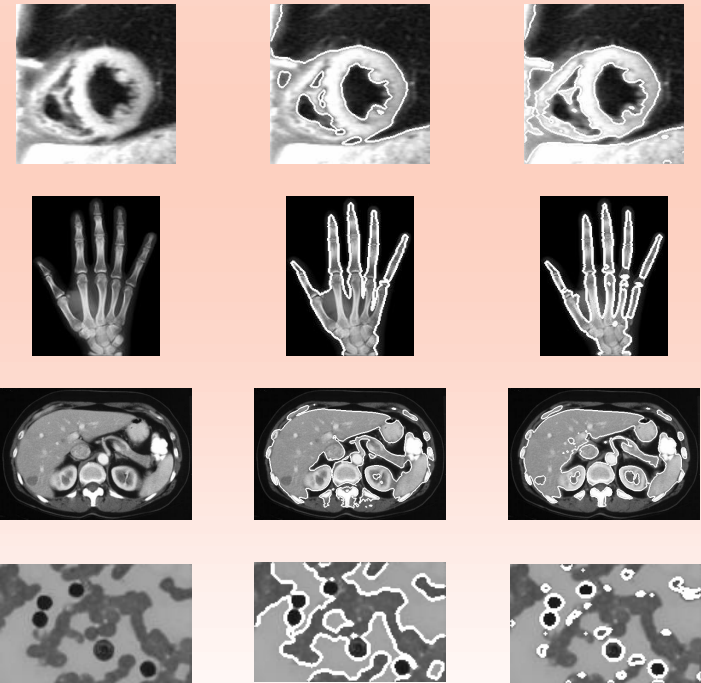


Left: segmentation without MBS, right: MBS segmentation

Strategies for background construction

- In **step I**, choose U_c on Ω_{ij} as $ra_{ij} + (1-r)m_{ij}$, $0 \leq r \leq 1$, a_{ij} : arithmetic average, m_{ij} : minimum of U_0 on Ω_{ij} .
- \tilde{U} must contain only background information, not objects information. Thus select $m = m_x = m_y$ such that number of blocks in U_c corresponding to objects are smaller than the number of smoothing iterations in **step II**.

Numerical experiments



Left: Original image, middle: segmentation without MBS, right: MBS segmentation

